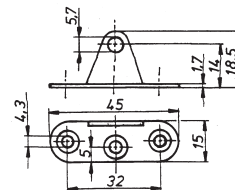
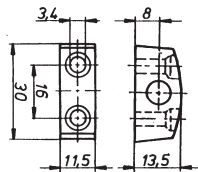
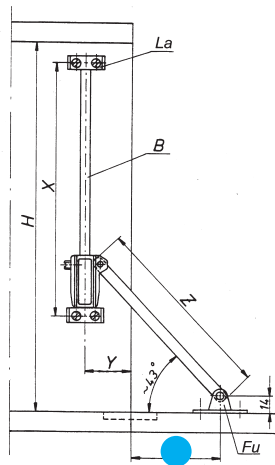




Compas d'abattant EXQUISIT à frein à visser

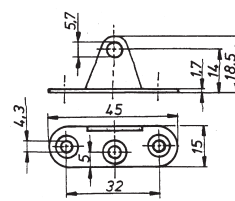
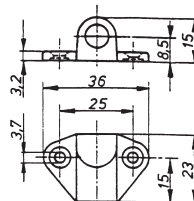
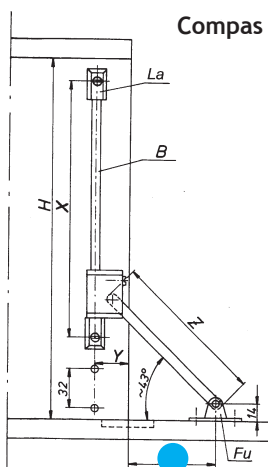


● A déterminer par un essai de montage.

| HAUTEUR INTER. | X | Y | Z | B | EXECUTION | CODE | |
|----------------|-----|----|-----|-----|----------------------------|-----------|-----------|
| | | | | | | GAUCHE | DROITE |
| Min. 360 mm | 225 | 37 | 197 | 230 | nickelé/ plastique noir | 4202-3200 | 4202-3201 |



Compas d'abattant EXQUISIT MSE à frein à visser - SANS AIMANT



● A déterminer par un essai de montage.

| HAUTEUR INTER. | X | Y | Z | B | EXECUTION | CODE | |
|----------------|-----|----|-----|-----|-----------|-----------|-----------|
| | | | | | | GAUCHE | DROITE |
| Min. 360 mm | 256 | 28 | 169 | 248 | nickelé | 4202-3170 | 4202-3171 |